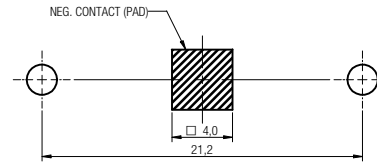


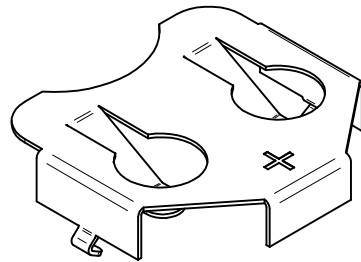
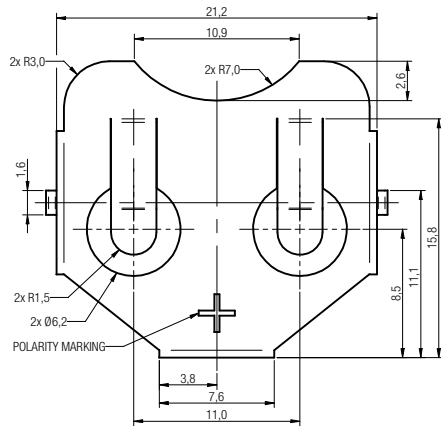
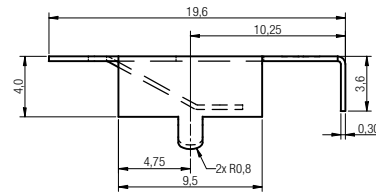
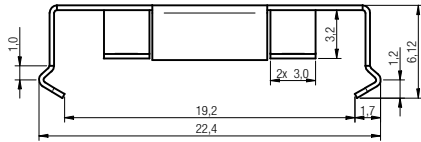
# TECHNICAL CHARACTERISTICS

## SPECIFICATION

- >Item No.: 79523211
- >Material: Phosphor Bronze Nickel Plated
- >Rohs Compliant



PCB MOUNTING LAYOUT



Scale - 2:1

			<b>GENERAL TOLERANCE</b> .x = +/- 0,30 .xx = +/- 0,20		Basic material		
			Date	Name	DESCRIPTION		
			Drawn	10-10-07	BattHold		
			Checked		Battery Holder		
			Würth Elektronik eiCan		Scale	2:1	
					Position		
					Drawing.- No. 79523211		
						SIZE	
						A4	
REV	FILE	DATE	BY	EDV NO	79523211.dft		
						System: Solid Edge V20	