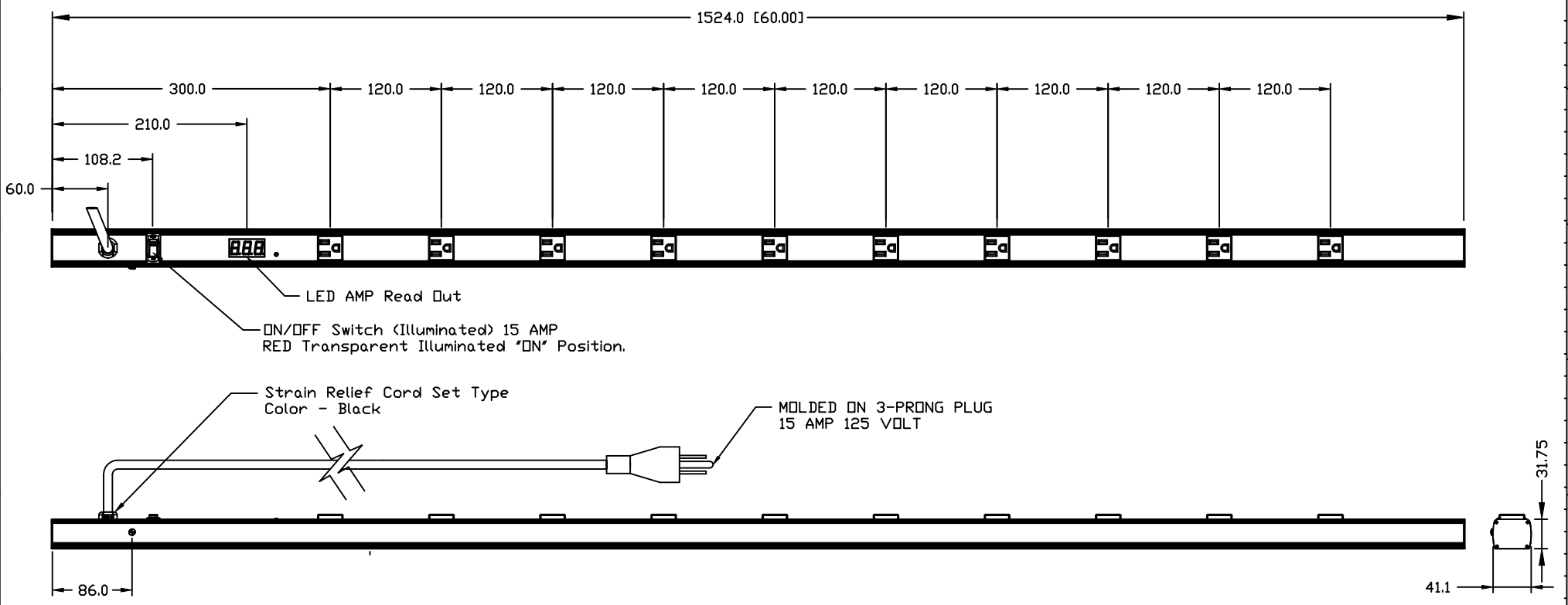


REVISIONS				
ZONE	REV.	DESCRIPTION	DATE	APPROVED
	X	Outlet Definition		WB
	1	Safety and Regulatory	2/19/2016	WB
	2	Production Level Spec.	3/21/2016	WB



Part Description	Zero U Rack Mount PDU, 10 Outlets, 15A WMP LED Read Out, Circuit Breaker
Delta Part Number	PDU1015-VM
Finish	Powder Coat Black
Safety	UL/cUL (UL60950-1)
Cord Length & AWG	15' (14 AWG x 3)
Connector - AC Input	NEMA 5-15P
Connector - AC Output	NEMA 5-15R

DELTA 台灣電子工業股份有限公司
DELTA ELECTRONICS, INC.

THESE DRAWINGS AND SPECIFICATIONS ARE THE PROPERTY OF DELTA ELECTRONICS, INC. AND SHALL NOT BE REPRODUCED OR USED AS THE BASIS FOR THE MANUFACTURE OR SELL OF APPARATUS OR DEVICES WITHOUT PERMISSION.

Dimensional Tolerances (mm):
 DIMENSIONAL TOLERANCES (mm) HOLE & REEL ANGLES & ROP
 () () ()
 0-10 ±0.25 0-10 ±0.25 0-10 ±0.25 0-10 ±0.25
 10-20 ±0.25 10-20 ±0.25 10-20 ±0.25 10-20 ±0.25
 20-30 ±0.25 20-30 ±0.25 20-30 ±0.25 20-30 ±0.25
 ABOVE 30 ±0.25 ABOVE 30 ±0.25 ABOVE 30 ±0.25 ABOVE 30 ±0.25

SCALE UNIT MM USED ON

Drawn	ID-3D Design	Safety
Design		Layout
Checked		IE
Approved	W. Bradshaw	EE, Chk
Material	Aluminum	EE, App'd
Description	ZERO U VERTICAL MOUNT PDU	
Part No.	PDU1015-VM	REV.
SIZE	A2	2
SHEET	1 OF 1	ISSUE DATE 23 MAR 16