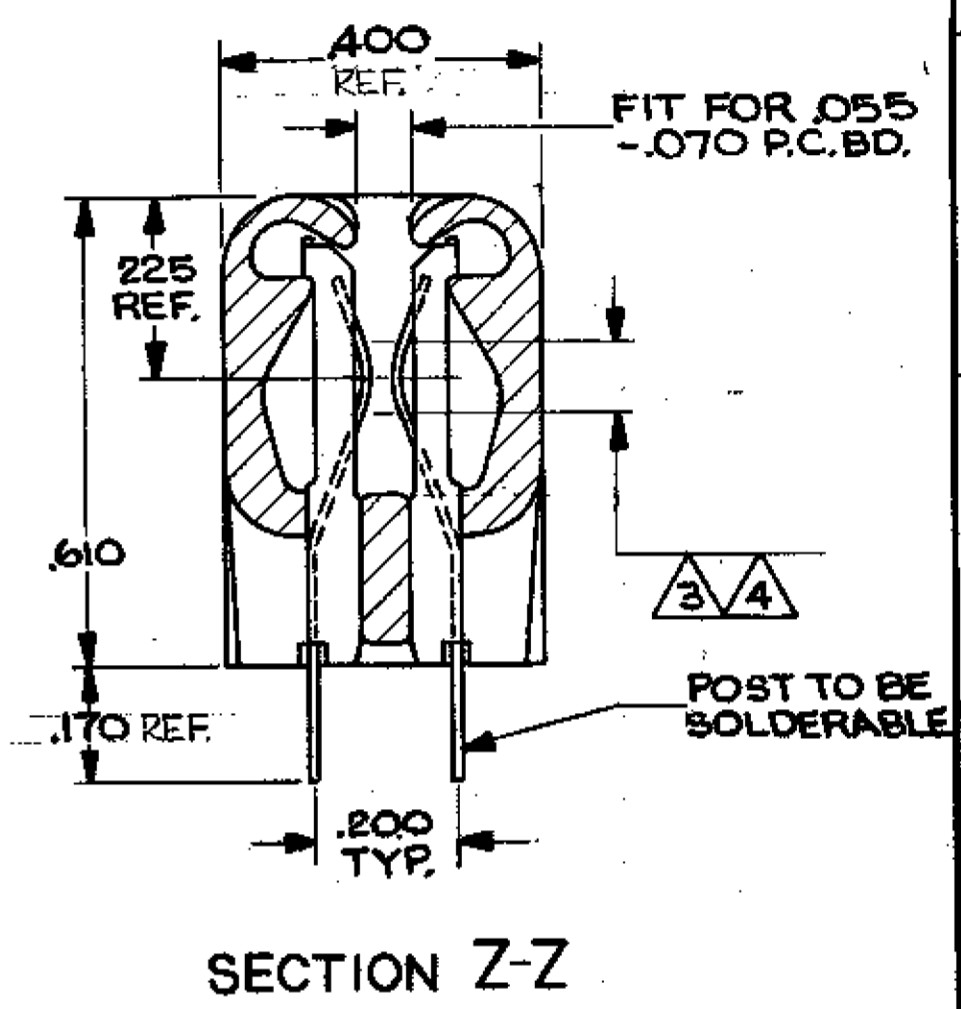
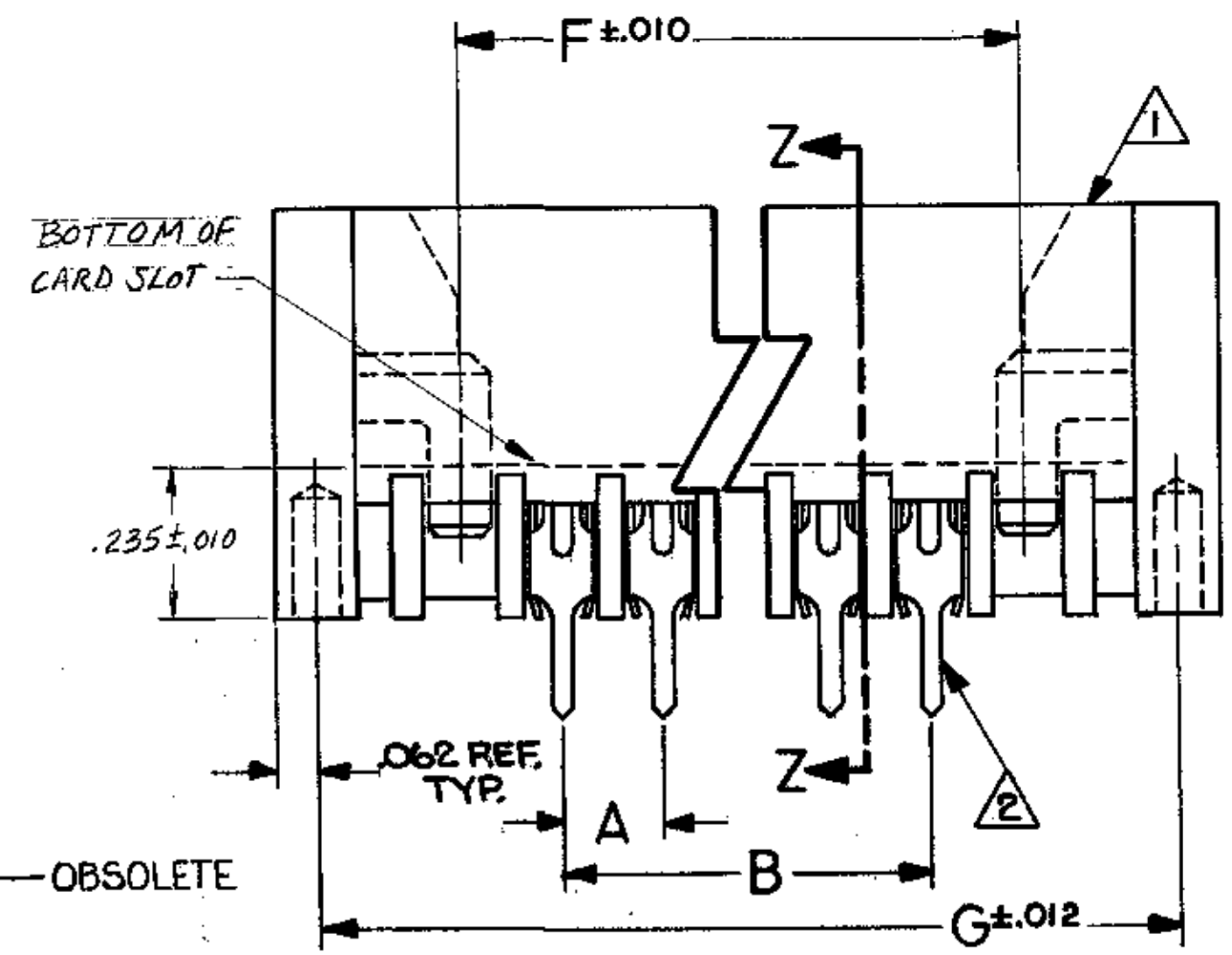


PART NUMBER	NO. OF POS.	A	B	F	G	FINISH
583715 -1	3	.100	.200	.400	.734	3
-2	4		.300	.500	.834	
-3	5		.400	.600	.934	
-4	6		.500	.700	1.034	3
-5	7		.600	.800	1.134	3
-6	8		.700	.900	1.234	
-7	9		.800	1.000	1.334	3
-8	10		.900	1.100	1.434	
-9	11		1.000	1.200	1.534	
1-583715-0	12		1.100	1.300	1.634	
1- -1	13		1.200	1.400	1.734	
1- -2	14		1.300	1.500	1.834	
1- -3	15		1.400	1.600	1.934	
1- -4	16		1.500	1.700	2.034	3
1- -5	17		1.600	1.800	2.134	3
1- -6	18		1.700	1.900	2.234	3
1- -7	19		1.800	2.000	2.334	
1- -8	20		1.900	2.100	2.434	3
1- -9	21		2.000	2.200	2.534	
2-583715-0	22		2.100	2.300	2.634	
2- -1	23		2.200	2.400	2.734	
2- -2	24		2.300	2.500	2.834	
2- -3	25		2.400	2.600	2.934	3
2- -4	26		2.500	2.700	3.034	
2- -5	27		2.600	2.800	3.134	3
2- -6	28		2.700	2.900	3.234	
2- -7	29		2.800	3.000	3.334	3
2- -8	30		2.900	3.100	3.434	
2- -9	31		3.000	3.200	3.534	3
3-583715-0	32		3.100	3.300	3.634	3
3- -1	33		3.200	3.400	3.734	
3- -2	34		3.300	3.500	3.834	
3- -3	35		3.400	3.600	3.934	3
3- -4	36		3.500	3.700	4.034	3
3- -5	37		3.600	3.800	4.134	
3- -6	38		3.700	3.900	4.234	
3- -7	39		3.800	4.000	4.334	
3- -8	40		3.900	4.100	4.434	
3- -9	41		4.000	4.200	4.534	3
4-583715-0	42		4.100	4.300	4.634	
4- -1	43		4.200	4.400	4.734	
4- -2	44		4.300	4.500	4.834	
4- -3	45		4.400	4.600	4.934	
4- -4	46		4.500	4.700	5.034	
4- -5	47		4.600	4.800	5.134	
4- -6	48		4.700	4.900	5.234	
4- -7	49		4.800	5.000	5.334	
4- -8	50		4.900	5.100	5.434	3
4- -9	73		7.200	7.400	7.734	
5-583715-0	60		5.900	6.100	6.434	
5- -1	72		7.100	7.300	7.634	
5- -2	74		7.300	7.500	7.834	
5- -3	65		6.400	6.600	6.934	
5- -4	70		6.900	7.100	7.434	3
5- -5	5		.400	.600	.934	3
5- -6	55		5.400	5.600	5.934	3
5- -7	80		7.900	8.100	8.434	
5- -8	61		6.000	6.200	6.534	
5- -9	55		5.400	5.600	5.934	
6-583715-0	58	.100	5.700	5.900	6.234	3

PART NUMBER	NO. OF POS	A	B	F	G	FINISH
6-583715-1	17	.100	1.600	1.800	2.134	4

REVISIONS		DATE	APPROVED
DESCRIPTION	DATE	APPROVED	
REVISED PER ECO-11-005140	31MAR11	HMR	

SUPERSEDED BY 5683715-3

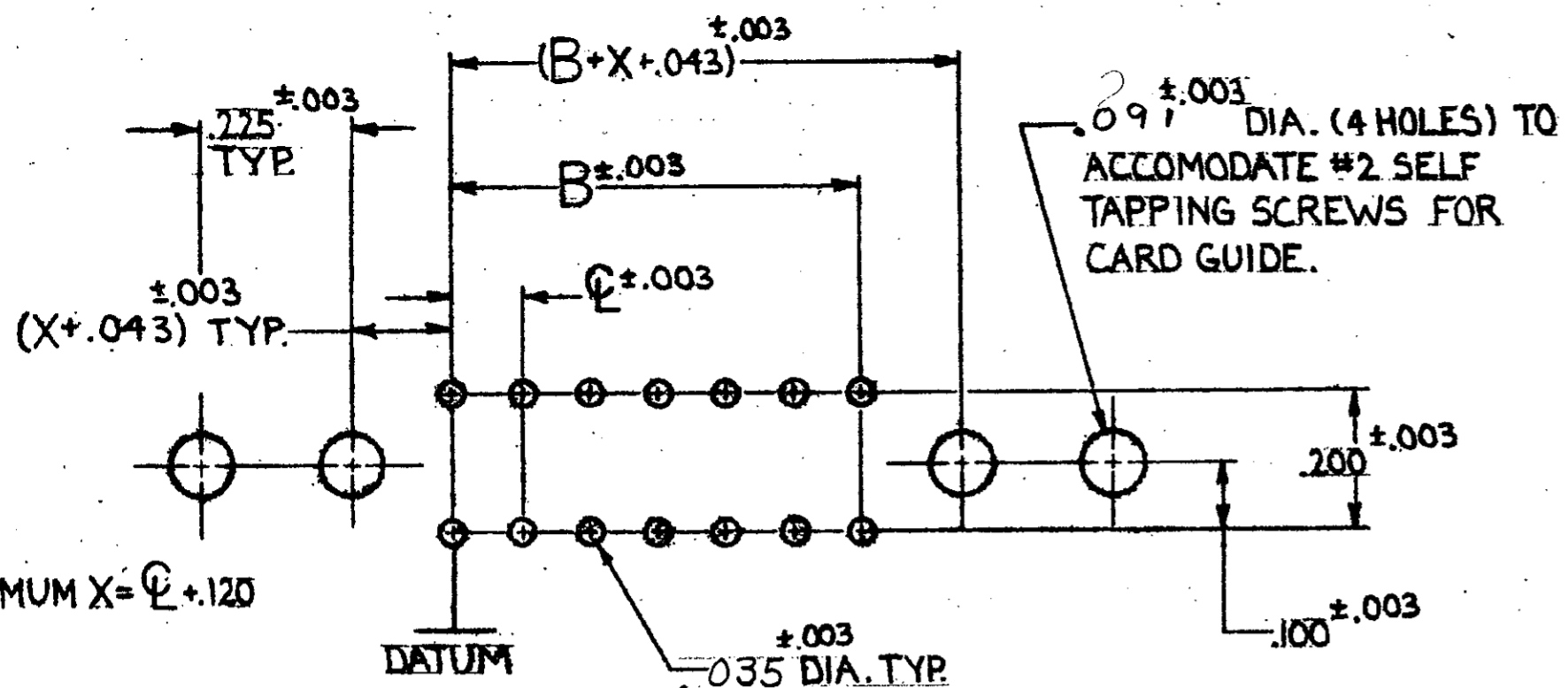


- 1 HOUSING MATERIAL : GLASS-FILLED POLYESTER, COLOR-BLACK.
- 2 CONTACT MATERIAL : PHOSPHOR BRONZE
- 3 FINISH : .000015 GOLD, SELECTIVE
- 4 FINISH : .000030 GOLD, SELECTIVE
- 5 OBSOLETE PARTS: OBSOLETE CIS STREAMLINING PER D.RENAUD/D.SINISI

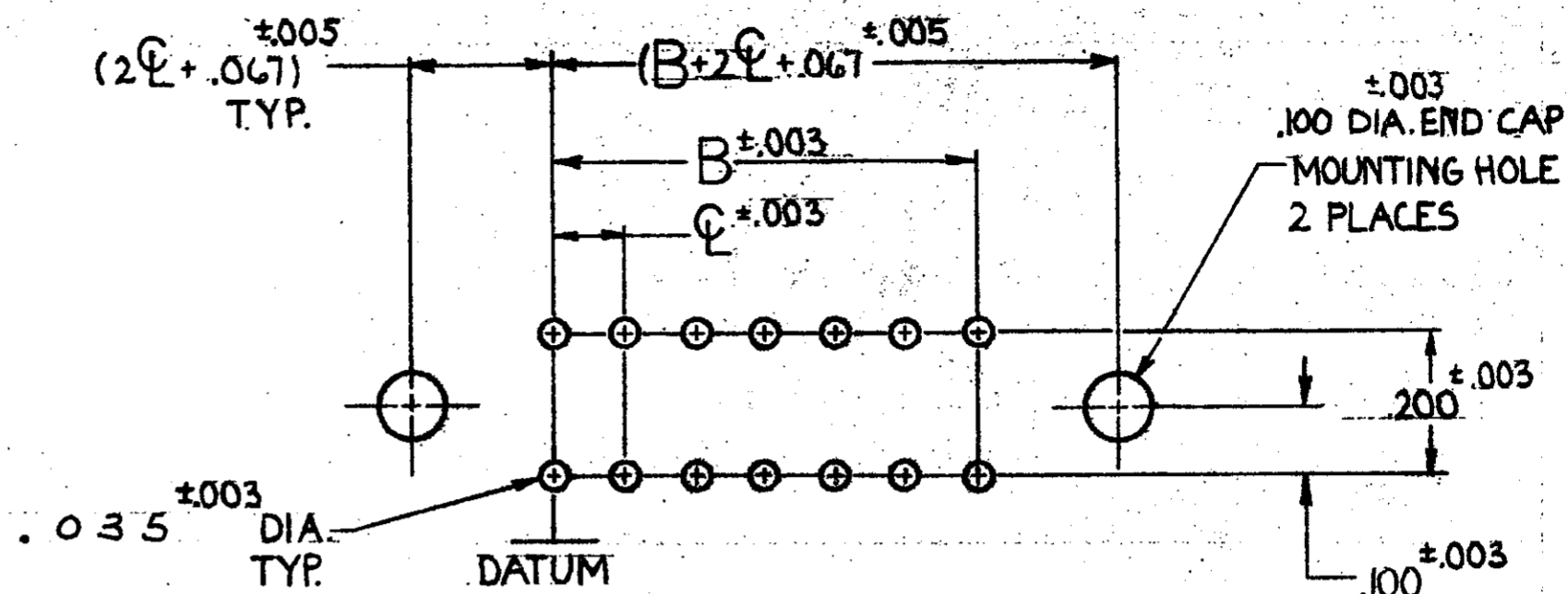
UNLESS OTHERWISE SPECIFIED DIMENSIONS ARE IN INCHES. TOLERANCES ON: DECIMALS ±.005 ANGLES		CONTRACT NO		PART NO	
MATERIAL		DR <i>A.M. SHARPE</i> 9-9-82		NAME	
FINISH		CHK <i>Ranf.</i> 10-11-82		ASSEMBLY, TWIN LEAF, .100 @ .010x.024 SOLDER TYPE POST, END CAP VERSION	
		APPD <i>Ray Johnston</i> 10-11-82		SIZE	
		APPD <i>MR. T. Hummer</i> 10-11-82		FSCM NO	
		DSGN APPD		DRAWING NO	
		OTHER APPD		C 00779 583715	
				SCALE 4:1	
				SHEET 1 OF 2	

© Copyright

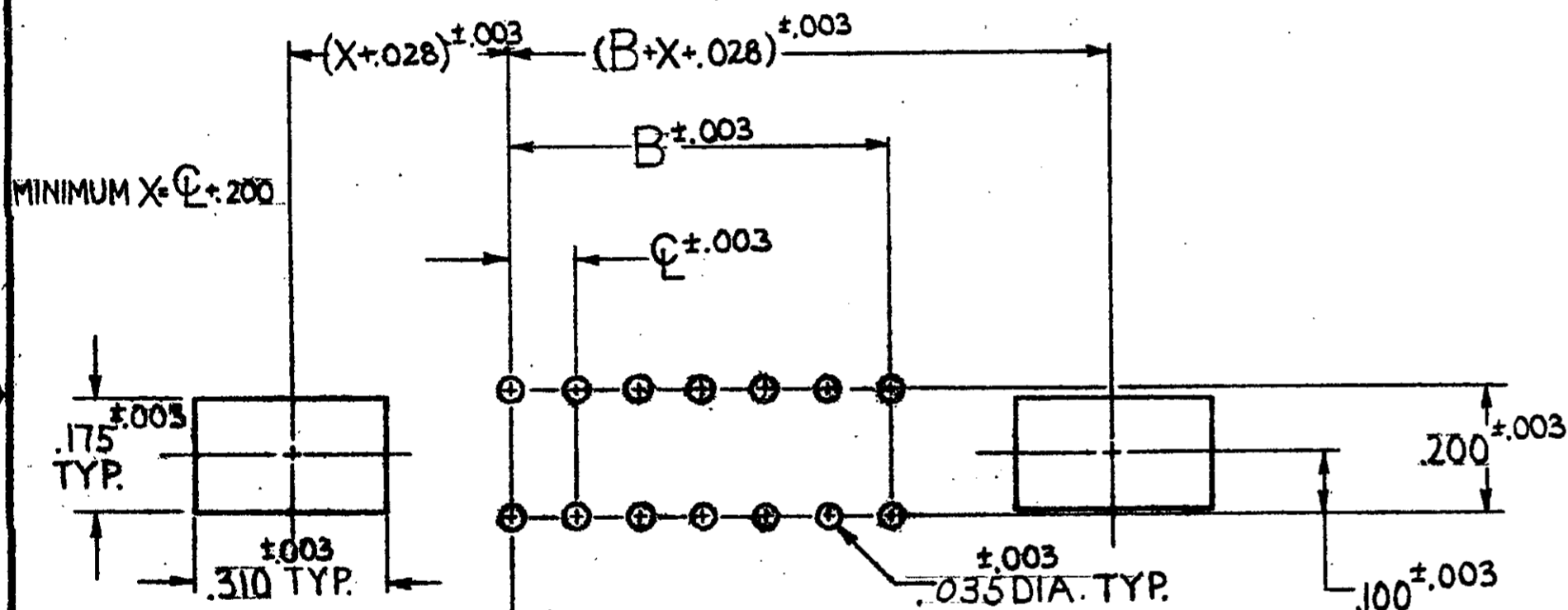
REVISIONS				DATE	APPROVED
P	F	ZONE/LTR	DESCRIPTION		
			SEE SHEET 1		



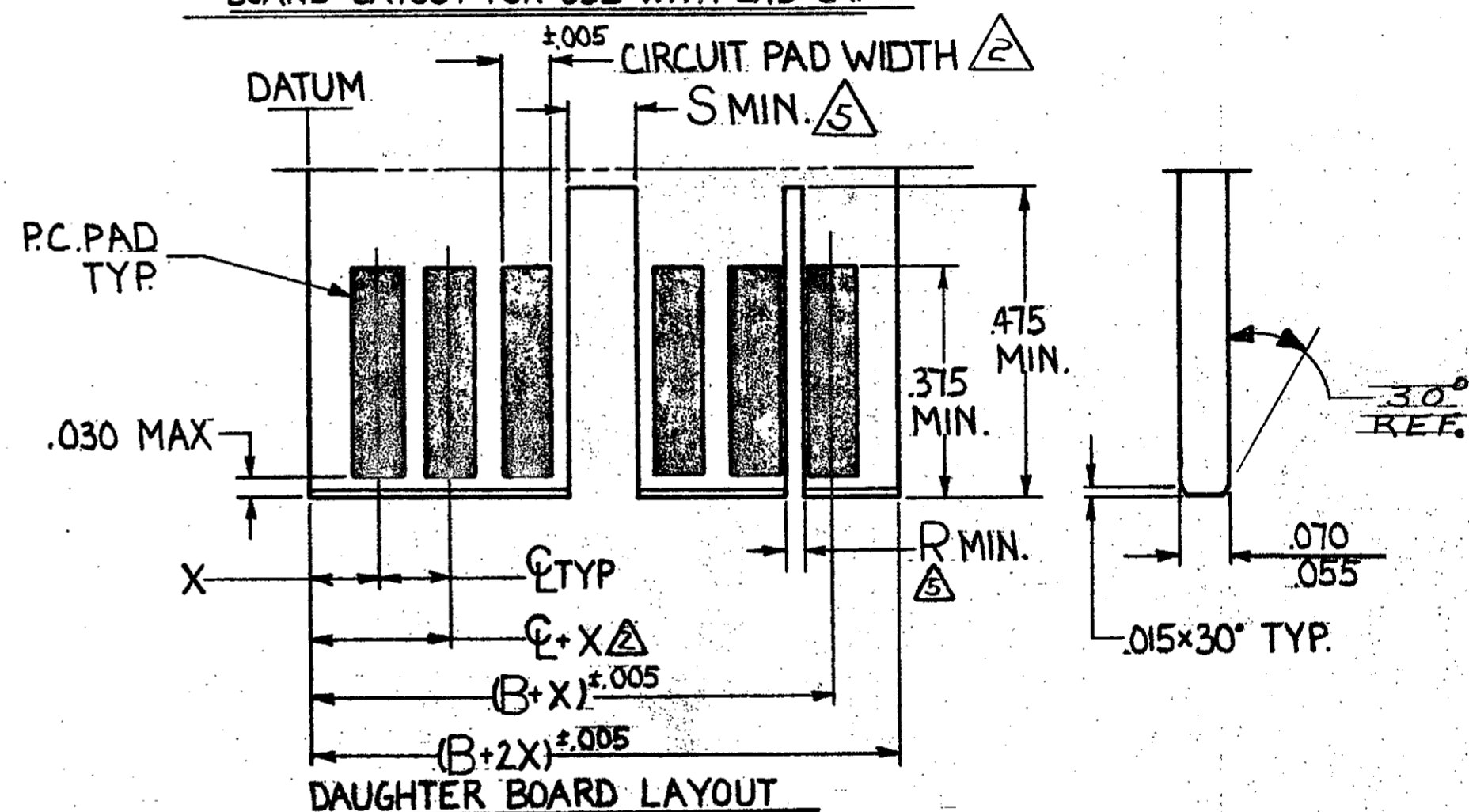
BOARD LAYOUT FOR USE WITH AMP CARD GUIDE PART NO. 583671



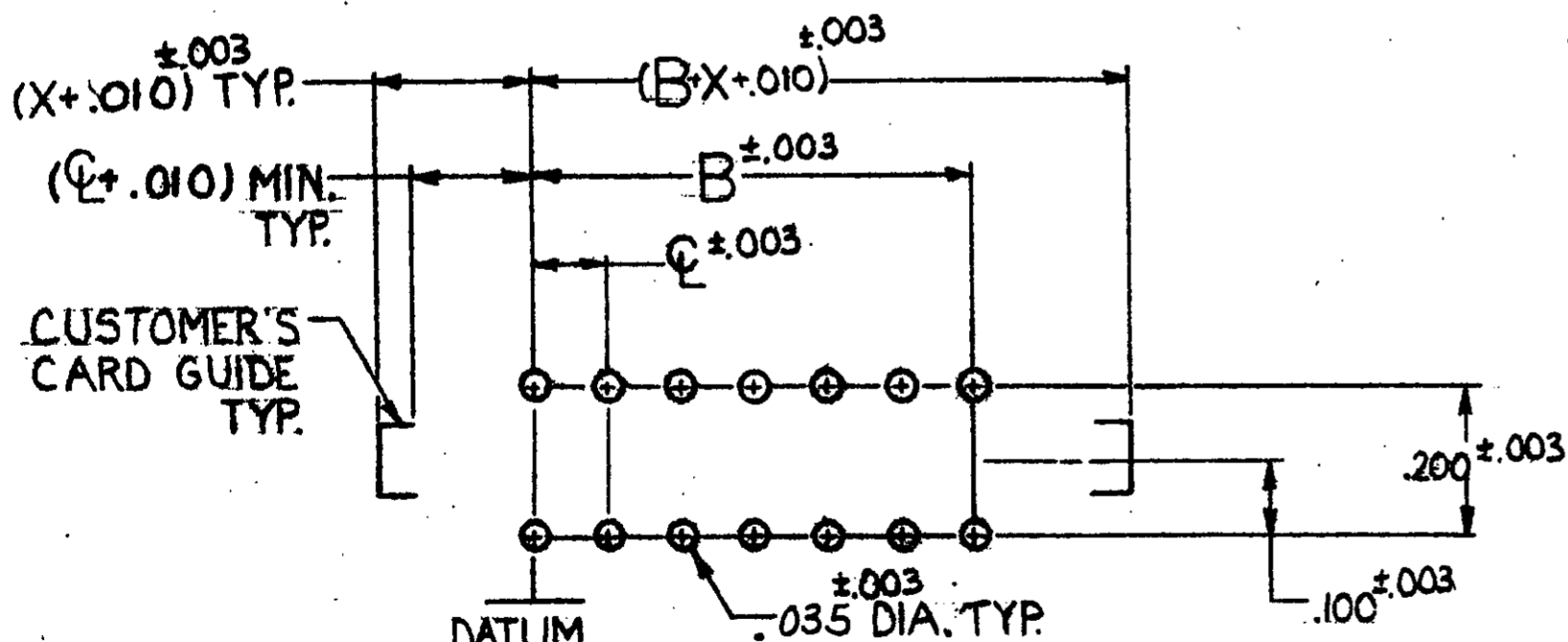
BOARD LAYOUT FOR USE WITH END CAP



BOARD LAYOUT FOR USE WITH AMP CARD GUIDE PART NO. 583408 OR 583425



DAUGHTER BOARD LAYOUT



BOARD LAYOUT FOR USE WITH CUSTOMER SUPPLIED CARD GUIDE.

- MAX. ALLOWABLE WARPAGE OF MOTHER BOARD NOT TO EXCEED .005/INCH. MAX. ALLOWABLE BOW OF DAUGHTER BOARD NOT TO EXCEED .010/INCH. THICKNESS OF MOTHER BOARD IS .062 FOR DOUBLE SLOTTED CARD GUIDES AND .104 MAX. FOR ALL OTHER MOUNTING CONDITIONS.
- Δ EACH PAD LOCATION INCREASES BY C ±.005 WITH A NON-CUMULATIVE TOLERANCE OF ±.005
CIRCUIT PAD WIDTH - .045 FOR .100 C, .072 FOR .150 C, .072 FOR .125 C, .080 FOR .156 C
- Δ DIMENSIONS APPLY TO BOTH SIDES OF DAUGHTER BOARD.
- Δ C INCREMENTS ON MOTHER BOARD HAVE ±.003 NON-CUMULATIVE TOLERANCE.
- Δ X IS A CUSTOMER CONTROLLED DIMENSION EXCEPT FOR END CAP ASSEMBLIES WHERE X=C-.008
- Δ THE SLOT FOR INTER-CONTACT KEYING PLUGS MUST BE CENTERED BETWEEN THE PRINTED CIRCUIT PADS, WHILE THE SLOT FOR ON-CONTACT KEYING PLUGS MUST BE CENTERED ON THE AREA OF A PRINTED CIRCUIT PAD.

INTER-CONTACT KEYING PLUG	R	FOR CENTER LINE SPACING
530030-1	.050	.125-.150-.156
530030-2	.040	.100

ON-CONTACT KEYING PLUG	S	FOR CENTER LINE SPACING
58314-1	.121	.100-.125
58314-2	.160	.150-.156

UNLESS OTHERWISE SPECIFIED DIMENSIONS ARE IN INCHES. TOLERANCES ON: DECIMALS ± ANGLES ±		CONTRACT NO 10-5-82	PART NO	
MATERIAL	DR M. Smith	CHK Ray J.	TE Connectivity	
FINISH	APPD Ray Johnston 10-11-82	APPD M.R. Thumma 10-12-82	NAME HOUSING ASSEMBLY TWIN LEAF CONNECTOR	
	DSGN APPD	OTHER APPD	SIZE CODE IDENT NO C 00779	DRAWING NO 583715
			SCALE #	SHEET 2 OF 2