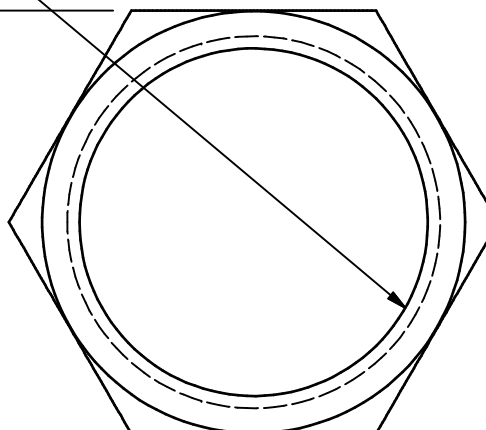


M12x0.75
THREAD



▲ 14.00
[.551 in]



▲ 2.50
[.098 in]

NOTE:

1. ALL DIMENSIONS IN MM [INCH]
2. GENERAL TOLERANCE: X.X=±0.4
X.XX=±0.25
3. OPERATING TEMPERATURE: -30°C TO +85°C.
4. ▲ DENOTES CRITICAL PARAMETER.
5. 2002/95/EC (ROHS) COMPLIANT



E-SWITCH®

B	21394	CHANGE THICKNESS FROM 1.98 TO 2.50	3/5/14	EBP
A	17904	New Release	12/18/07	rc
REV	PCR NO	DESCRIPTION	DATE	BY

TITLE RP8100HEXNUT				
SCALE	DATE	DR	DWG	REV
4=1	12/18/2007	rc	T081102	B

THE INFORMATION CONTAINED IN THIS DOCUMENT IS PROPRIETARY TO E-SWITCH AND IS NOT TO BE COPIED OR TRANSFERRED