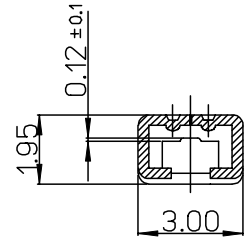
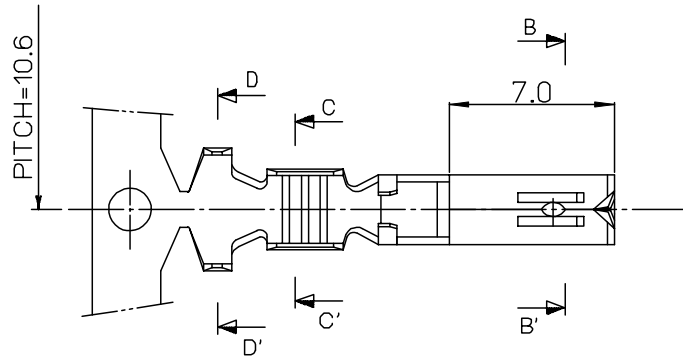
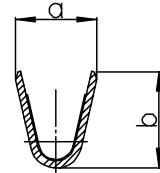
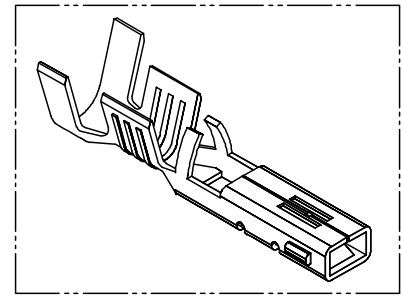


10 9 8 7 6 5 4 3 2 1

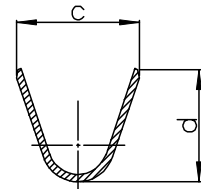
F
E
D
C
B
A



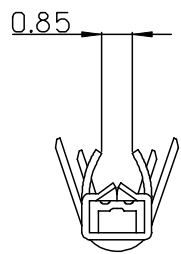
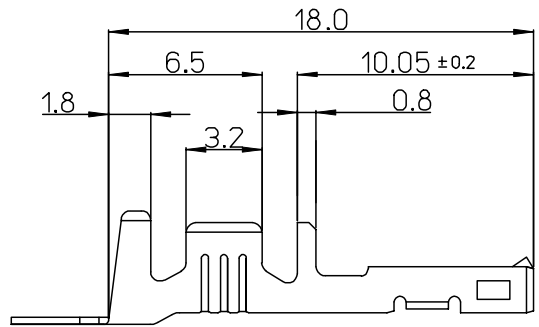
SECTION: B-B'



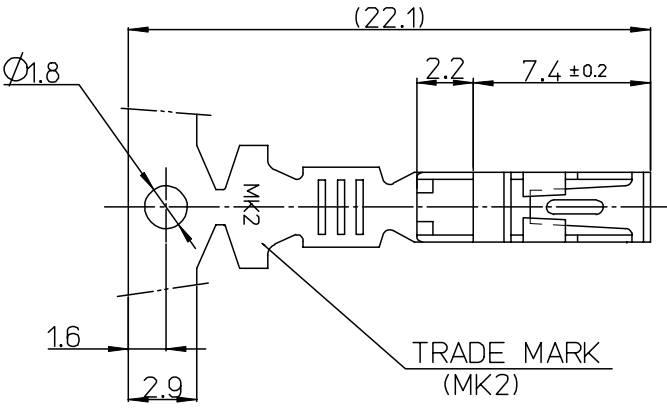
SECTION: C-C'



SECTION: D-D'



- NOTES
1. MATERIAL : PHOSPHOR BRONZE, 0.3mm THICKNESS
 2. FINISHS: PRE-PLATED TIN(Sn)
 3. USE WITH : 35745 AND 35747 MALE TERMINALS
 4. RECOMMENDED LENGTH OF WIRE STRIP IS 4.0-4.8mm.



MATERIAL NO	ENG NO	AWG	a	b	c	d
357480111	35748-0111	#22 - #20	2.85	2.8	4.2	4.0
357480411	35748-0411	#24	2.2	1.75	3.85	3.5

NEW RELEASE EC NO: KOR2008-0087 DRWN: JHPARK01 2007/11/15 CHKD: WY. YANG 2007/11/15 APPR: YUNSIKKIM 2007/11/15	QUALITY SYMBOLS	GENERAL TOLERANCES (UNLESS SPECIFIED)	DIMENSION STYLE	SCALE	DESIGN UNITS	THIRD ANGLE PROJECTION
	▼ = 0 ▽ = 0	mm INCH 4 PLACES ± --- ± --- 3 PLACES ± --- ± --- 2 PLACES ± 0.3 ± --- 1 PLACE ± 0.25 ± --- ANGULAR ± 1 °	MM ONLY	5:1	METRIC	TITLE: 070 FEMALE TERMINAL DIMPLE B-TYPE MOLEX INCORPORATED
	DESCRIPTION	DRAFT WHERE APPLICABLE MUST REMAIN WITHIN DIMENSIONS	DRAWN BY: JB. JIN CHECKED BY: WY. YANG APPROVED BY: CW. LEE DATE: 2004/05/10	MATERIAL NO. DOCUMENT NO.	DATE: 2004/05/10 TITLE: 070 FEMALE TERMINAL DIMPLE B-TYPE MOLEX INCORPORATED	SHEET NO. 1 OF 01
	REV	SIZE: A3	SEE TABLE	SD-35748-002		

9 8 7 6 5 4 3 2 1