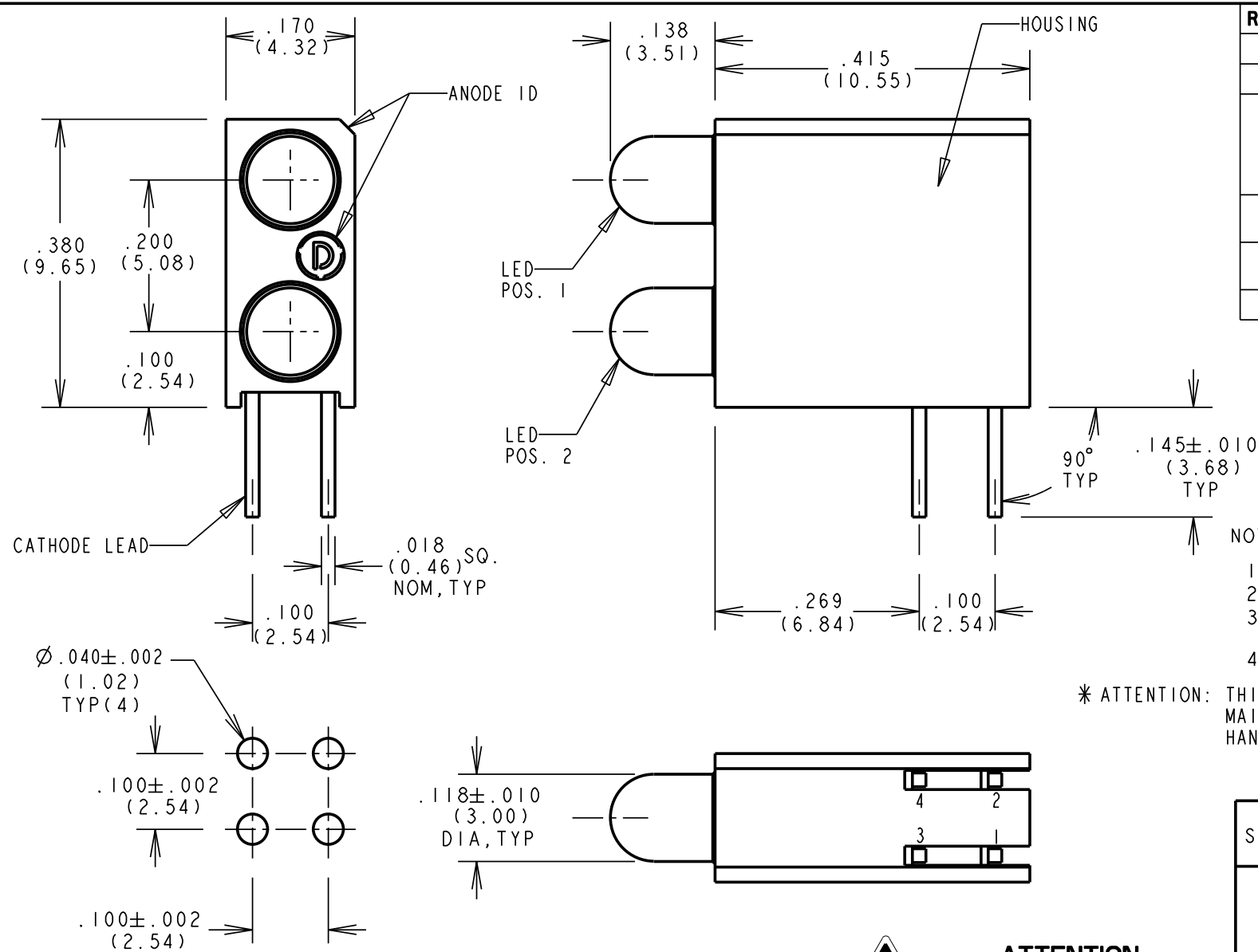
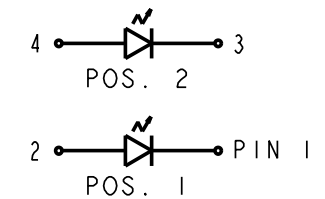


PART NUMBER	LED COLOR (DIFFUSED)	
	POSITION 1	POSITION 2
553-0101-200	BLANK	RED
553-0102-200	BLANK	GREEN
553-0103-200	BLANK	YELLOW
553-0110-200	RED	BLANK
553-0111-200	RED	RED
553-0112-200	RED	GREEN
553-0113-200	RED	YELLOW
553-0120-200	GREEN	BLANK
553-0121-200	GREEN	RED
553-0122-200	GREEN	GREEN
553-0123-200	GREEN	YELLOW
* 553-0128-200	GREEN	BLUE
553-0130-200	YELLOW	BLANK
553-0131-200	YELLOW	RED
553-0132-200	YELLOW	GREEN
553-0133-200	YELLOW	YELLOW
* 553-0188-200	BLUE	BLUE
553-0201-200	BLANK	RED
553-0202-200	BLANK	GREEN
553-0203-200	BLANK	YELLOW
553-0210-200	RED	BLANK
553-0211-200	RED	RED
553-0212-200	RED	GREEN
553-0213-200	RED	YELLOW
553-0220-200	GREEN	BLANK
553-0222-200	GREEN	GREEN
553-0232-200	YELLOW	GREEN
553-0233-200	YELLOW	YELLOW
553-0311-200	RED	RED
553-0322-200	GREEN	GREEN
553-0333-200	YELLOW	YELLOW



REV	ECN NO	REVISIONS	DRN	CKD	APP	DATE
A		NEW RELEASE	YY	--	N.O.	9-9-93
B		ADDED 25 NEW PART NUMBERS.	YY	--	N.O.	5-25-94
C		REVISED RED, YELLOW & GREEN LED SPECS.; ADDED NOTE 4; .118 WAS .115, 3.00 WAS 2.92; ADDED LOW CURRENT AND 5 VOLT INTEGRAL RESISTOR LED SPECS.	TC	D.C.	N.O.	6-28-99
D		ADDED P/N 553-0188-200, LED SPECS. AND "ATTENTION" NOTE.	TC	D.C.	N.O.	10-18-99
E		REVISED 2 mA & 5 V RED, GRN AND YELLOW LED SPECS.	TC	D.C.	N.O.	9-18-00
F		ADDED 553-0128-200	JMC			



LEAD CONFIGURATION

NOTES:

- MILLIMETER DIMENSIONS SHOWN FOR REFERENCE ONLY.
- LEADS TO FIT INTO HOLES SPACED AS PER PATTERN.
- PIN NUMBERS FOR REFERENCE ONLY, DESIGNATION NON-EXISTENT ON PART.
- DIALIGHT PART NUMBER: 553-0XXX-200.

* ATTENTION: THIS ASSEMBLY CONTAINS ELECTROSTATIC SENSITIVE DEVICES (ESDS). MAINTAIN ALL PRECAUTIONARY MEASURES DURING ASSEMBLY, HANDLING AND STORAGE IN ACCORDANCE WITH IPC-A-610.

OPERATING CHARACTERISTICS AT $T_A = 25^\circ\text{C}$

SYMBOL	PARAMETER	COLOR	MIN	TYP	MAX	UNITS	TEST COND.
V_F	FORWARD VOLTAGE	RED		2.0	2.8	V	$I_F = 10 \text{ mA}$
		YELLOW		2.1	2.8		
		GREEN		2.1	2.8		
		BLUE		3.5	4.2		
V_R	REVERSE VOLTAGE	ALL	5.0			V	$I_R = 100 \mu\text{A}$
λ_{PK}	PEAK WAVELENGTH	RED		635		nm	MEASURED AT PEAK
		YELLOW		585			
		GREEN		565			
		BLUE		428			
I_V	LUMINOUS INTENSITY	RED	7.4	10.0		mcd	$I_F = 20 \text{ mA}$
		YELLOW	7.4	10.0			
		GREEN	4.7	12.6		mcd	$I_F = 10 \text{ mA}$
		BLUE	6.3		20		



ATTENTION:
OBSERVE PRECAUTIONS FOR
HANDLING ELECTROSTATIC
SENSITIVE DEVICES

2 mA LOW CURRENT LED.
OPERATING CHARACTERISTICS AT 25°C AMBIENT
FOR 553-02XX-400)

CHARACTERISTICS	L.E.D. COLOR	MIN	TYP	MAX	UNITS	TEST COND.
LUMINOUS INTENSITY	RED	1.0	1.6		mcd	$I_F = 2 \text{ mA}$
	YELLOW	1.0	1.6			
	GREEN	1.0	1.6			
FORWARD VOLTAGE	RED		1.7	2.2	V	$I_F = 2 \text{ mA}$
	YELLOW		1.8	2.7		
	GREEN		1.9	2.2		
REVERSE VOLTAGE	ALL	5			V	$I_R = 10 \mu\text{A}$
PEAK WAVELENGTH	RED		635		nm	MEASURED AT PEAK
	YELLOW		585			
	GREEN		565			
VIEWING ANGLE	ALL		60		Degree	

5 V., INTEGRAL RESISTOR LED
OPERATING CHARACTERISTICS AT 25°C AMBIENT
FOR 553-03XX-400)

CHARACTERISTICS	L.E.D. COLOR	MIN	TYP	MAX	UNITS	TEST COND.
LUMINOUS INTENSITY	RED	8.7	29		mcd	$V_F = 5 \text{ V}$
	YELLOW	3.7	12.6			
	GREEN	5.6	19			
FORWARD CURRENT	RED		10	20	mA	$V_F = 5 \text{ V}$
	YELLOW		10	20		
	GREEN		12	20		
REVERSE VOLTAGE	ALL	5			V	$I_R = 100 \mu\text{A}$
PEAK WAVELENGTH	RED		635		nm	MEASURED AT PEAK
	YELLOW		585			
	GREEN		565			
VIEWING ANGLE	ALL		60		Degree	

THIS DRAWING AND THE CONTENTS HEREIN ARE CONFIDENTIAL AND THE SOLE PROPERTY OF DIALIGHT. REPRODUCTION OF THIS DRAWING OR CONSTRUCTION OF ANY PARTS WITHIN THIS DRAWING ARE FORBIDDEN WITHOUT THE WRITTEN CONSENT OF DIALIGHT.

SCALE: 5:1		DRAWING NUMBER	REV
ALL DIM'S IN: INCHES (MM)		C-15815	F
TOLERANCES: UNLESS OTHERWISE SPECIFIED		TITLE CBI, 3MM BI-LEVEL	
FRACTIONS: $\pm 1/64$ DECIMALS (.XX): $\pm .01$ DECIMALS (.XXX): $\pm .005$ DECIMALS (.XXXX): $\pm .0005$ ANGLES: $\pm 1^\circ$		MATERIAL	
FINISH:		Dialight	
FSCM 83330		1501 ROUTE 34 SOUTH FARMINGDALE, NJ 07727	
SHEET 1 OF 1		FAMILY TABLE:	