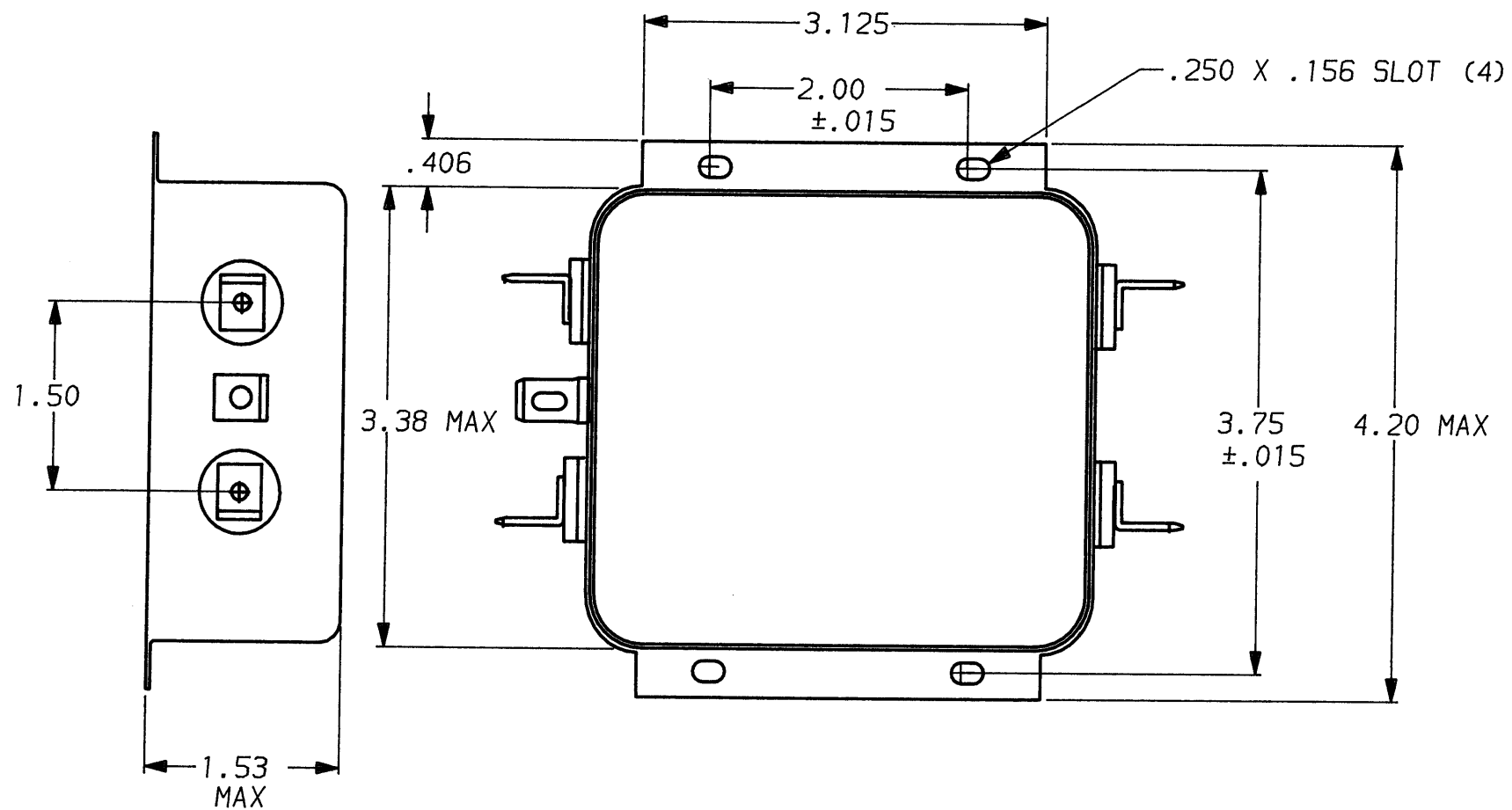


DESCRIPTION	APPROVED BY	DATE	REV
	C. West	8-2-80	3
ECO-09-026495	AEG	10DEC09	4



**SAFETY ORGANIZATION(S):**

THIS FILTER HAS BEEN FORMALLY RECOGNIZED, CERTIFIED OR APPROVED BY THE LISTED AGENCY. THEREFORE, ALL TEST/REQUIREMENTS SPECIFIED IN THE LATEST REVISION OF THE FOLLOWING AGENCY STANDARDS HAVE BEEN MET:

UL RECOGNIZED

UL 1283

**OPERATING SPECIFICATIONS:**

LINE VOLTAGE/CURRENT:

20 AMP., 120/250 VAC

LINE FREQUENCY:

50-60Hz

MAX. CASE RISE @ RATED CURRENT:

40°C

MAX. LEAKAGE CURRENT, EACH

.5mA at 120V 60 Hz

LINE TO GROUND

1.0 mA at 250V 50 Hz

OPERATING AMBIENT TEMP. RANGE:

-10°C TO +40°C @ RATED CURRENT, I<sub>r</sub>

IN AN AMBIENT, T<sub>a</sub>, HIGHER THAN 40°C, THE MAXIMUM OPERATING CURRENT, I<sub>o</sub>, IS AS FOLLOWS:

$$I_o = I_r \sqrt{\frac{85 - T_a}{45}}$$

**RELIABILITY SPECIFICATIONS:**

STORAGE TEMPERATURE:

-40°C TO +85°C

HUMIDITY:

21 DAYS @ 40°C 95% RH

CURRENT OVERLOAD TEST:

6 TIMES RATED CURRENT FOR 8 SECONDS

**TEST SPECIFICATIONS:**

INDUCTANCE:

.99 mH NOMINAL

CAPACITANCE: (MEASURED @ 1 KHz, 0.25 VAC MAX., 25°C ±1°C)

LINE TO GROUND:

.013µF ±20%

LINE TO LINE:

.813µF ±20%

DISCHARGE RESISTOR

10 MΩ

LINE/GROUND AND LINE/LINE

6000 MΩ (MIN) AT 100 VDC

INSULATION RESISTANCE

20°C AND 50% RH

**RECOMMENDED RECEIVING INSPECTION HIPOT:**

LINES TO GROUND:

2250 VDC FOR 1 MINUTE

LINE TO LINE:

1450 VDC FOR 1 MINUTE

**FILTER APPROVAL:**

THE BEST WAY TO SELECT AND QUALIFY A FILTER IS FOR YOUR ENGINEERING TO TEST THE UNIT IN YOUR EQUIPMENT.

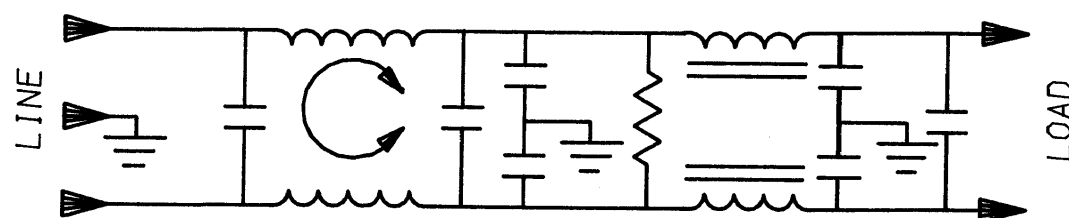
.250 FASTONS .07 X .156 SLOT (5 PLACES)

.57 MAX

3.94 MAX

1609041-4 OBSOLETE  
6609041-4

**1** OBSOLETE PARTS: OBSOLETE CIS STREAMLINING PER D.RENAUD/D.SINISI



50n - 50n (MINIMUM) INSERTION LOSS									
FREQUENCY MHz	.15	.5	1	2	5	10	20	30	
COMMON dB	13	30	35	48	65	65	57	53	
DIFF. dB	28	65	65	65	65	65	65	65	

This document is proprietary to CORCOM INC. and is not to be reproduced nor used for manufacturing purposes except on CORCOM's order or prior written consent.

TOLERANCE EXCEPT AS NOTED			
DECIMAL:	.XXX	.XX	.X
ENGLISH:	±.025		± 1°
METRIC:	±		
MATERIAL: AS SUPPLIED			
FINISH: AS SUPPLIED			

		LIBERTYVILLE, IL 60048	
POWER LINE FILTER			
SCALE	DATE	DRG. NO.	REV.
NTS	9-12-89	20W1	4
DRW. BY	ORIGINATOR		
TDL	CW		