

# SPECIFICATIONS

RoHS Compliant

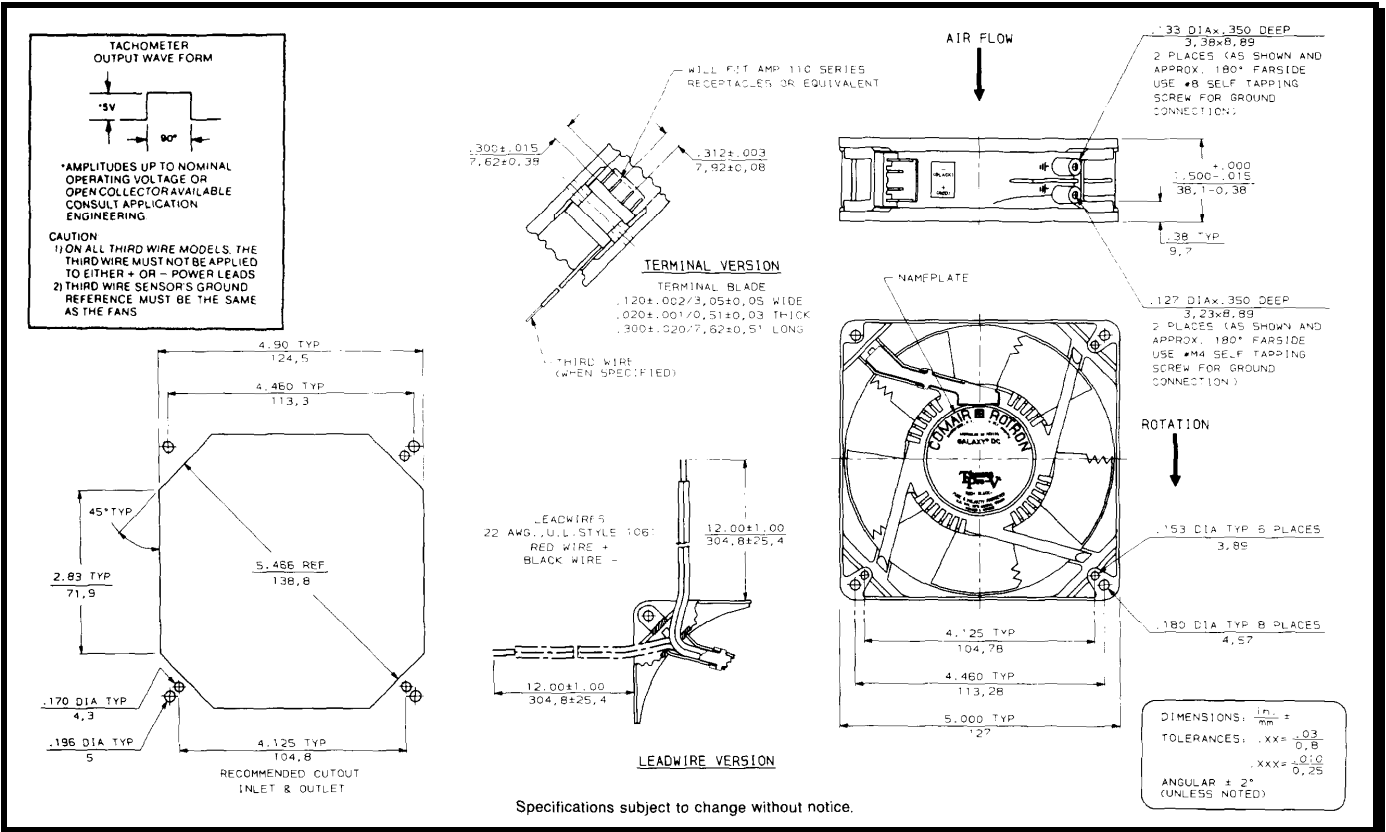


**Model Number:** GL24B7

**Part Number:** 031636

March 29, 2005

## Mechanical Drawing:



### Motor:

Nominal Voltage	= 24 vdc
Operating Voltage Range	= 12 - 24 vdc
Nominal Running Current	= 0.630 amps
Locked Rotor Current	= 1.350 amps
Running Power	= 15.0 watts
Average Speed	= 3200 RPM
Bearings	= Ball
Air Flow	= 150 CFM
Acoustic	= 53.6 dBA

### Construction:

Venturi: Die cast zinc alloy, painted black.  
Propeller: Plastic, Black, UL 94V-0.

### Life Expectancy:

This fan is designed for continuous duty life of 82,500 hours at 50°C.

### Agency Certifications:

UL, CE

### Additional Features:

Brushless DC Motor  
Locked Rotor Protection  
Automatic Restart Capability  
Reverse Polarity Protected  
Operating Temperature: -10°C to 70°C  
Storage Temperature: -40°C to 85°C

### Tachometer:

Output: 5vdc TTL  
I<sub>c</sub>: 5mA Typical  
Isolated: No  
Pulses per Revolution: 2

### Termination:

12" Lead wires, UL 1061, 22 AWG  
Red - Power (+)  
Black - Ground (-)  
Blue/White - Tachometer (Output)