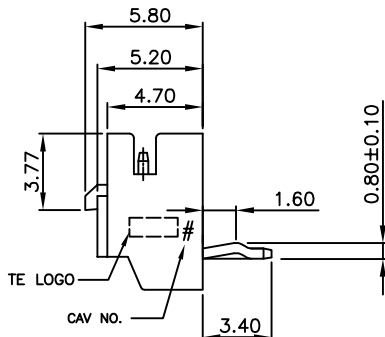
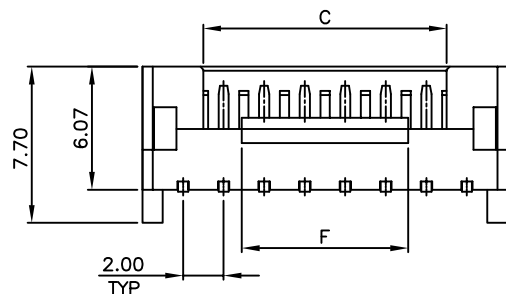
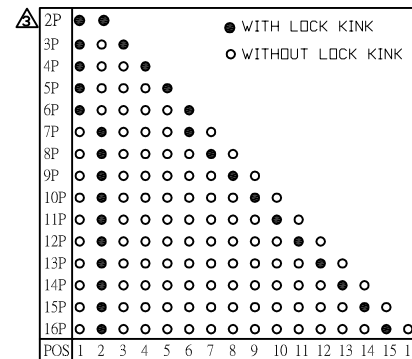
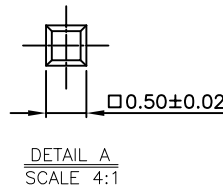
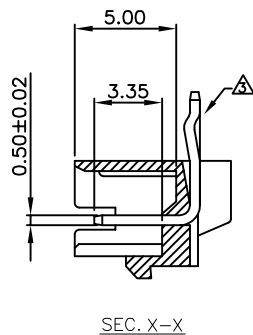
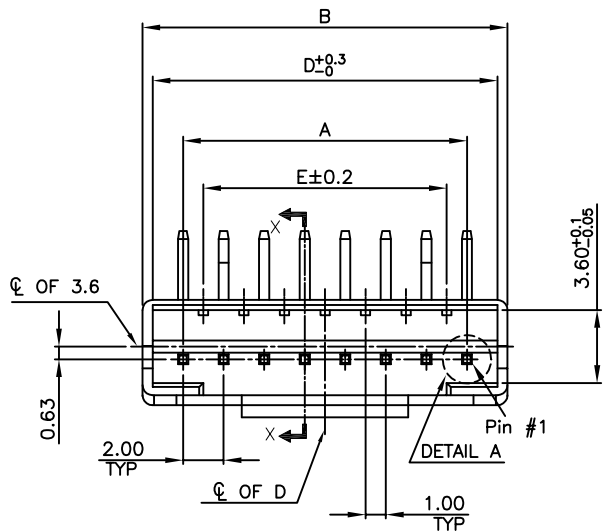


THIS DRAWING IS UNPUBLISHED. RELEASED FOR PUBLICATION
 © COPYRIGHT BY - ALL RIGHTS RESERVED.

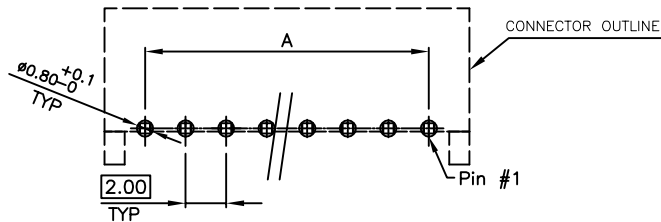
LOC	DIST	REVISIONS				
P	LTR	DESCRIPTION	DATE	DWN	APVD	
DW	-	A2	REVISED PER ECR-15-012298	03APR2016	J.J	W.H

NOTE:

- MATERIAL:
HSG: NYLON 66, UL 94V-0. COLOR:NATURAL
CONTACTS: BRONZE.
- FINISH:
CONTACTS: 2.032μm [80μ"] MIN. BRIGHT-TIN ON OVER ALL
0.762μm [30μ"] MIN. NICKEL UNDERPLATED
- CONTACT SOLDERTAIL KINK DIRECTION(BOARDLOCK) SEE TABLE
- NON ACCUMULATIVE TOLARANCE
- WAVE SOLDER CAPABLE TO 260°C PER TE CONNECTIVITY TEST SPEC. 109-202, CONDITION C.



	0.835	8.2	28.0	33.0	28.0±0.2	34.0	30.0	16P	1-2041145-6
OBSOLETE	0.785	8.2	26.0	31.0	26.0±0.2	32.0	28.0	15P	1-2041145-5
	0.735	8.2	24.0	29.0	24.0±0.2	30.0	26.0	14P	1-2041145-4
OBSOLETE	0.685	8.2	22.0	27.0	22.0±0.2	28.0	24.0	13P	1-2041145-3
	0.635	8.2	20.0	25.0	20.0±0.2	26.0	22.0	12P	1-2041145-2
OBSOLETE	0.585	8.2	18.0	23.0	18.0±0.2	24.0	20.0	11P	1-2041145-1
OBSOLETE	0.54	8.2	16.0	21.0	16.0±0.2	22.0	18.0	10P	1-2041145-0
	0.49	8.2	14.0	19.0	14.0±0.2	20.0	16.0	9P	2041145-9
	0.44	8.2	12.0	17.0	12.0±0.2	18.0	14.0	8P	2041145-8
OBSOLETE	0.40	8.2	10.0	15.0	10.0±0.2	16.0	12.0	7P	2041145-7
OBSOLETE	0.37	4.0	8.0	13.0	8.0±0.2	14.0	10.0	6P	2041145-6
OBSOLETE	0.32	4.0	6.0	11.0	6.0±0.2	12.0	8.0	5P	2041145-5
	0.26	4.0	4.0	9.0	4.0±0.2	10.0	6.0	4P	2041145-4
	0.20	2.0	2.0	7.0	2.0 ^{+0.2} _{-0.08}	8.0	4.0	3P	2041145-3
OBSOLETE	0.14	2.0	/	5.0	2.0	6.0	2.0	2P	2041145-2
WEIGHT (g)	F	E	D	C	B	A	POS	P/N	



RECOMMENDER PCB LAYOUT
 TOLERANCE: ±0.05 (TOP VIEW)
 (PCB THK=1.0~1.6mm)

THIS DRAWING IS A CONTROLLED DOCUMENT.

DIMENSIONS: MM	TOLERANCES UNLESS OTHERWISE SPECIFIED:	DWN J. LAI	30OCT2009		TE Connectivity HPI 2.0mm HEADER CONNECTOR, R/A, DIP TYPE
		CHK S. CHIEN	30OCT2009		
		APVD W. KODAMA	30OCT2009		
		PRODUCT SPEC 108-57788			
MATERIAL SEE NOTE	FINISH SEE NOTE	APPLICATION SPEC	NAME	SIZE A300779	CAGE CODE C=2041145
		WEIGHT SEE TABLE	RESTRICTED TO	SCALE	SHEET 1 OF 2
		CUSTOMER DRAWING			REV A2

4

3

2

1

THIS DRAWING IS UNPUBLISHED. RELEASED FOR PUBLICATION
© COPYRIGHT BY ALL RIGHTS RESERVED.

LOC	DIST	REVISIONS					
DW		P	LTR	DESCRIPTION	DATE	DWN	APVD
				SEE SHEET 1.			

D

D

C

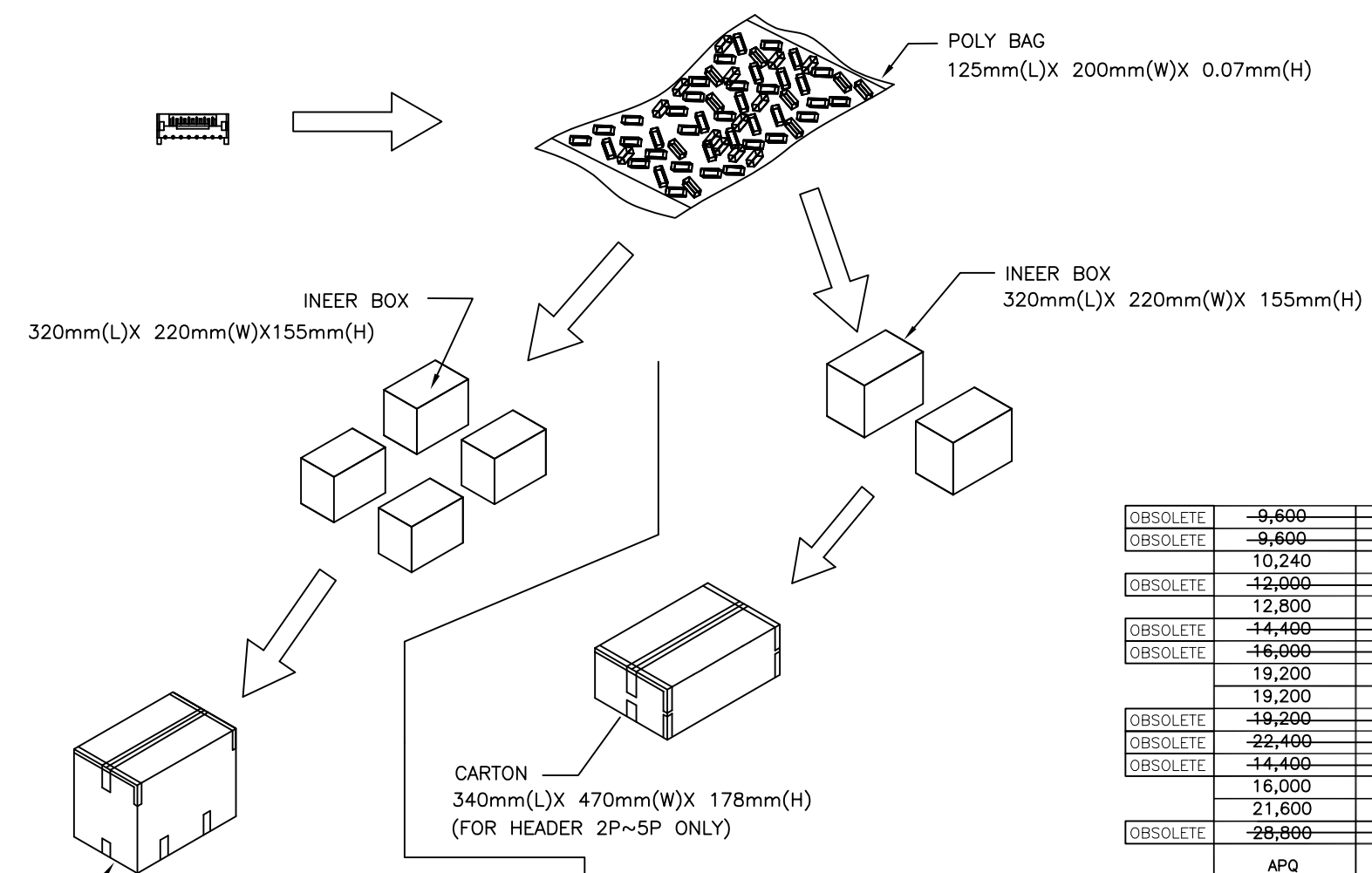
C

B

B

A

A



OBSOLETE	9,600	160	16P	1-2041145-6
OBSOLETE	9,600	160	15P	1-2041145-5
	10,240	160	14P	1-2041145-4
OBSOLETE	12,000	200	13P	1-2041145-3
	12,800	200	12P	1-2041145-2
OBSOLETE	14,400	200	11P	1-2041145-1
OBSOLETE	16,000	250	10P	1-2041145-0
	19,200	300	9P	2041145-9
	19,200	300	8P	2041145-8
OBSOLETE	19,200	300	7P	2041145-7
OBSOLETE	22,400	350	6P	2041145-6
OBSOLETE	14,400	450	5P	2041145-5
	16,000	500	4P	2041145-4
	21,600	600	3P	2041145-3
OBSOLETE	28,800	800	2P	2041145-2
	APQ (PCS/CARTON)	PPQ (PCS/BAG)	CIRCUITS	PART NUMBER

THIS DRAWING IS A CONTROLLED DOCUMENT.

DIMENSIONS: MM	TOLERANCES UNLESS OTHERWISE SPECIFIED:	DWN	TE Connectivity		
	0 PLC ± .	CHK	NAME		
	1 PLC ± .	APVD	HPI 2.0mm HEADER CONNECTOR, R/A, DIP TYPE		
	2 PLC ± .	PRODUCT SPEC	SIZE	CAGE CODE	DRAWING NO
	3 PLC ± .	APPLICATION SPEC	A3	00779	©=2041145
4 PLC ± .	ANGLES ± .	WEIGHT	RESTRICTED TO		
MATERIAL	FINISH	CUSTOMER DRAWING			SCALE
			SHEET 2 OF 2		REV A2