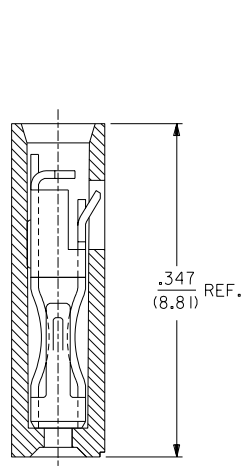
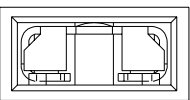
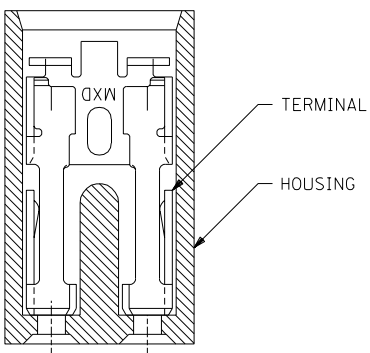


EDP NO.	ENG NO.	FINISH
15-38-1026	A-7859-2A164	TIN OVERALL
15-29-1025	A-7859-2A554	15 GOLD
15-29-1027	A-7859-2A561	30 GOLD

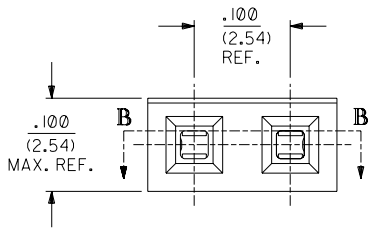
**PART IDENTIFICATION:**



**SECTION A-A**



**SECTION B-B**



**NOTES:**

- MATERIAL;  
HOUSING: GLASS FILLED POLYESTER; 94V-0; COLOR: BLACK  
TERMINAL: PHOSPHOR BRONZE ALLOY.
- THIS PRODUCT CONFORMS TO MOLEX PRODUCT SPEC. PS-7859.
- TO BE USED WITH .025/(0.64) SQUARE PINS.
- MINIMUM MATING PIN LENGTH: .200/(5.08)  
MAXIMUM MATING PIN LENGTH: .270/(6.86)
- PRODUCT IS PACKAGED IN BOXES PER PK-70873-0815.

**FINISH SPECIFICATION**

- TIN OVERALL - .000150 MINIMUM TIN PLATE OVER  
.000050 MINIMUM NICKEL UNDERPLATE.
- 15 GOLD - .000015 MINIMUM GOLD PLATE IN SELECT AREA OVER  
.000050 MINIMUM NICKEL UNDERPLATE OVERALL.
- 30 GOLD - .000030 MINIMUM GOLD PLATE IN SELECT AREA OVER  
.000050 MINIMUM NICKEL UNDERPLATE OVERALL.

NOTE FOR LEAD FREE CONVERSION:  
THE PRIMARY SHIPPING CARTON WILL BE LABELED "COMPLIANT TO ROHS DIRECTIVE 2002/95/EC AND ELV ANNEX II OF DIRECTIVE 2000/53/EC". CARTONS WITHOUT THIS LABEL MAY CONTAIN PRODUCT WITH LEAD.

D	LEAD FREE CONV ECN UCP2004-2133 RKADAMS 04/04/27
CI	ADDED PKG SPEC. PER ECN U70786 WHETSTON 97/2/7
C	CHANGED MATERIAL PER ECR #U51214 95/06/02 CAC
B	REVISED ENG. NOS. PER ECR # U31581 10/26/93 REED
A	RELEASED PER ECR # U30372 03/11/93 REED
3	REVISE GOLD PLTG. PER ECR # U12055 10/18/91 AAB
2	REVISE TERM. PLTG. PER ECR # U11096 06/18/91 AAB
1	*X* RELEASE PER ECR # U10445 02/07/91 AAB

DIMENSIONS SHOWN (METRIC) INCH		▽ = 0		= 0		REVISE ONLY ON CAD SYSTEM	
UNLESS OTHERWISE SPECIFIED TOLERANCES: ANGULAR ± 1/2°							
INCH		METRIC		TITLE			
3 PLACE	± .005	---	---	SALES ASSY - SHUNT			
2 PLACE	± .01	± 0.13	---	2-CIRCUIT TERMINAL			
1 PLACE	---	± 0.25	---	W/PIN STOP			
DRAFT WHERE APPLICABLE MUST REMAIN WITHIN DIMENSIONS				MOLEX INCORPORATED		SHEET NO. DATE	
				LITSE,ILL. 60532		1 OF 1 02/07/91	
DRWG. BY AAB		CHK'D. BY		PART NO.		DRWG. NO.	
APP'D. BY MJM		SCALE 10: 1		SEE CHART		SDA-7859-2A***N	
FILE NAME 57859X1A		THIS DRAWING CONTAINS INFORMATION THAT IS PROPRIETARY TO MOLEX INC. AND SHOULD NOT BE USED WITHOUT WRITTEN PERMISSION		DA		C	