

ON Semiconductor®



Enabling Energy Efficient Solutions

Contact Us | Company | Investors | Careers | News | 简体中文 | 日本語 | Русский

Search

Part #/Keyword | Cross-Reference | Search Help

Home

Products

Design Support

Applications

Quality

MyON

- Design Support
  - Technical Documentation
  - Design Resources
    - Evaluation Boards**
    - Evaluation Board Documents
    - Design & Development Tools
    - Sample Kits
    - Software
    - Simulation Models
    - Product Recommendation Tools
    - Video
  - Technical Support

Home > Support > Design Support > Design Resources > Evaluation Boards

Previously Viewed Products

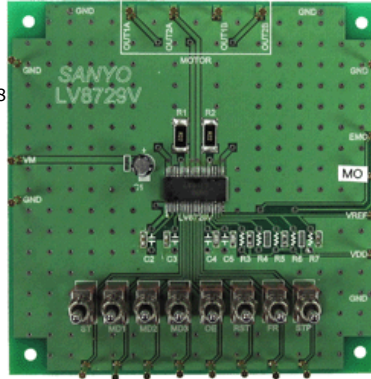
Select Product...

[Clear List](#)

## LV8729VGEVB:EVABOARD FOR LV8729V

### Evaluation Board Description

The LV8729V is a PWM current-controlled micro step bipolar stepping motor driver. This driver can do eight ways of micro step resolution of 1/128 step from Full step, and can drive simply by the CLK input.



### Design Support

- [Technical Documentation](#)
- [Design Resources](#)
- [Technical Support](#)
- [Sales Support](#)

### Features and Applications

#### Features

- Single-channel PWM current control stepping motor driver
- BiCMOS process IC
- Full, Half, Quarter, 1/8, 1/16, 1/32, 1/64, 1/128 step are selectable
- Advance the excitation step with the only step signal input
- Available forward reverse control
- Over current protection circuit
- Thermal shutdown circuit
- Input pull down resistance
- With reset pin and enable pin

### Evaluation Board Information

Evaluation Board	Status	Pb-free	Short Description	Parts Used	Action
<a href="#">LV8729VGEVB</a>	Active		EVABOARD FOR LV8729V		<input type="button" value="Buy Now"/> <a href="#">Contact Local Sales Office Inventory</a>

### Technical Documents

Type	Document Title	Document ID/Size	Rev
Eval Board: BOM	LV8729VGEVB Bill of Materials ROHS Compliant	<a href="#">LV8729VGEVB_BOM_ROHS.PDF</a> - 43.0 KB	0
Eval Board: Gerber	LV8729VGEVB Gerber Layout Files (Zip Format)	<a href="#">LV8729VGEVB_GERBER.ZIP</a> - 103.0 KB	0
Eval Board: Schematic	LV8729VGEVB Schematic	<a href="#">LV8729VGEVB_SCHEMATIC.PDF</a> - 87.0 KB	0
Eval Board: Test Procedure	LV8729VGEVB Test Procedure	<a href="#">LV8729VGEVB_TEST_PROCEDURE.PDF</a> - 169.0 KB	0