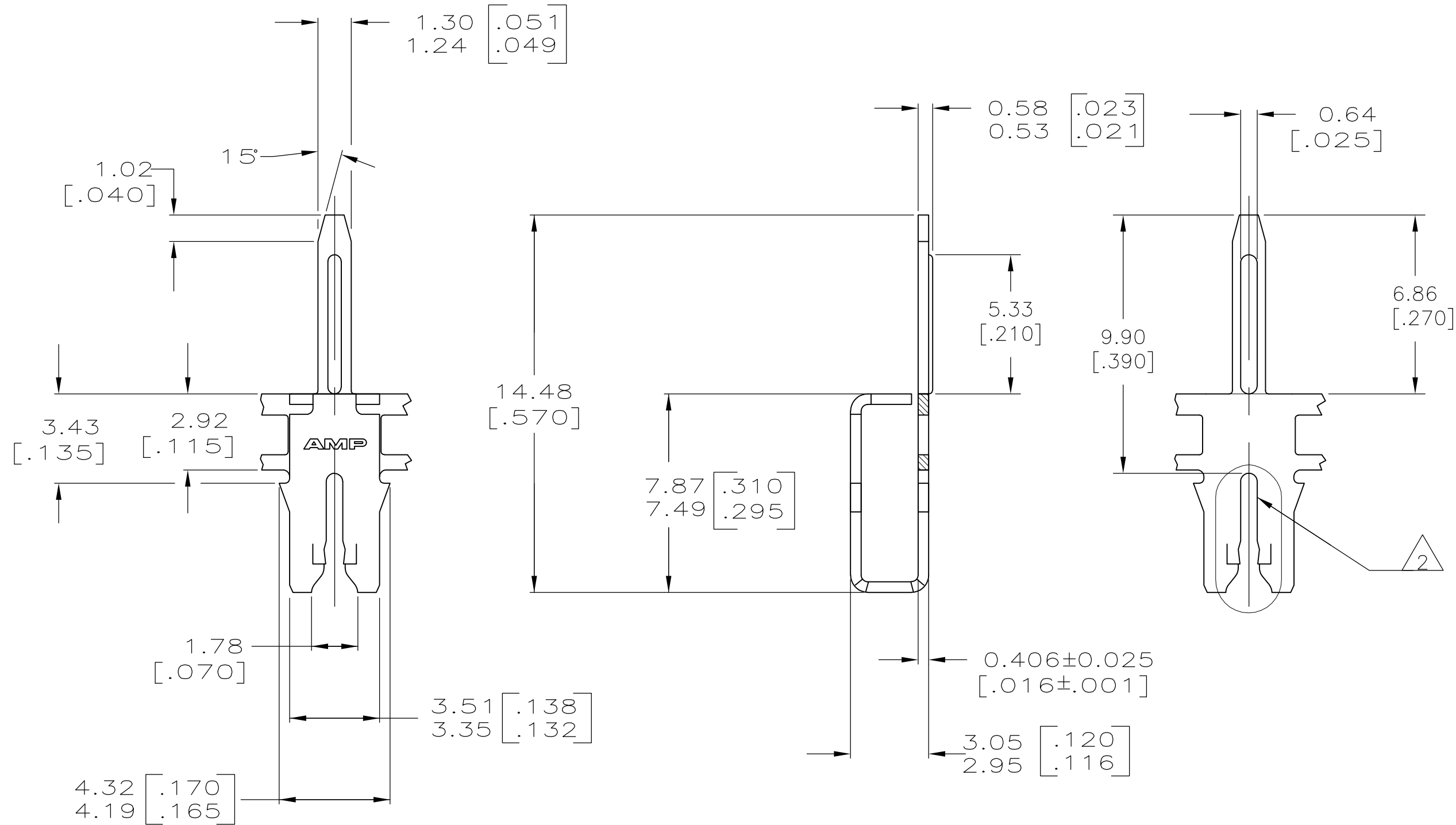
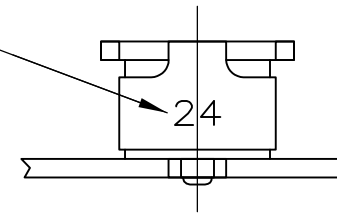


THIS DRAWING IS UNPUBLISHED. RELEASED FOR PUBLICATION
 © COPYRIGHT - By - ALL RIGHTS RESERVED.

LOC	DIST	REVISIONS			
P	LTR	DESCRIPTION	DATE	DWN	APVD
AF	50	B1	ECR-15-005665	10AUG2015	BDA/PKS

- 1 CONTINUOUS STRIP ON REELS WITH TERMINALS LOCATED ON 5.59 [.220] CENTERS.
- 2 SLOT TERMINATES A SINGLE COPPER MAGNET WIRE ONLY. COPPER RANGE: 0.91-1.15mm [#19-#17] AWG. ALUMINUM RANGE: 0.95-1.15mm [#18.5-#17] AWG. ALUMINUM WIRE RANGE APPLIES FOR POST-TIN PLATED VERSIONS ONLY.
- 3 TIN OVER NICKEL UNDERPLATE

IDENTIFICATION NUMBER 24 FOR MAGNET WIRE RANGE



1742708-1
 PART NUMBER

THIS DRAWING IS A CONTROLLED DOCUMENT.		DWN	JR RUTH	24NOV08		TE Connectivity						
DIMENSIONS: mm [INCHES]		CHK	KURT RANDOLPH	24NOV08		NAME						
TOLERANCES UNLESS OTHERWISE SPECIFIED:		APVD	KURT RANDOLPH	24NOV08		PRODUCT SPEC						
0 PLC ± - 1 PLC ± - 2 PLC ± 0.25 [.010] 3 PLC ± - 4 PLC ± - ANGLES ± 1°		APPLICATION SPEC		108-2012		POST, SOLDER, MAG-MATE						
MATERIAL	4M BRASS	FINISH	3		SIZE	A2	CAGE CODE	00779	DRAWING NO	C=1742708	RESTRICTED TO	-
CUSTOMER DRAWING					SCALE	6:1	SHEET	1 OF 1	REV	B1		