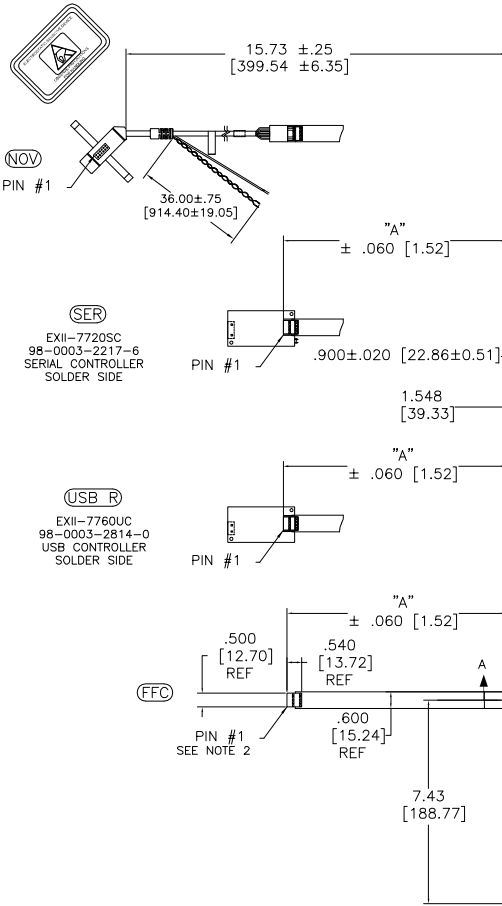


OGA DIAGONAL: 28.63 [727.24]
 VA DIAGONAL: 26.28 [667.40]
 PA DIAGONAL: 24.80 [629.95]

TOP LEVEL NUMBER	US NUMBER	TYPE	DIM "A" (TOTAL GLASS TO CONNECTOR)	A/G FINISH	PROD SPEC
17-8931-205	98-0003-2673-0	FFC	8.00" [203.20]	AG500	23655
17-8931-227	98-0003-2204-4	SER	8.00" [203.20]	AG500	23655
17-8931-206	98-0003-2674-8	NOV	SEE DWG	AG500	23655
17-8931-226	98-0003-3028-6	USB R	8.00" [203.20]	AG500	23655
N/A	98-0003-3647-3	USB R	8.00" [203.20]	WC100	34523
N/A	98-1100-0124-9	USB R FW9	8.00" [203.20]	AG500	23655
N/A	98-1100-0098-5	FFC	8.00" [203.20]	WC100	34523
N/A	98-1100-0107-4	USB R FW9	8.00" [203.20]	WC100	34523

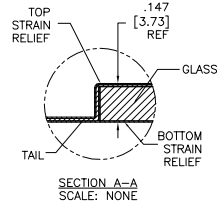
ESD CLAMSHELL CASE IS USED WITH ALL NOV, USB AND SER TERMINATIONS.



(USB R FW9)
 EXII-7769UC
 98-0003-2815-7
 USB CONTROLLER
 SOLDER SIDE

(USB R)
 EXII-7760UC
 98-0003-2814-0
 USB CONTROLLER
 SOLDER SIDE

(SER)
 EXII-7720SC
 98-0003-2217-6
 SERIAL CONTROLLER
 SOLDER SIDE



.147 ±.020 [3.73 ±.51]
 TOTAL THICKNESS
 OF GLASS, CABLE
 AND STRAIN RELIEF

NOTES:

- WEIGHT OF GLASS IN GRAMS: 1788 ±10%
- NICOMATIC HOUSING P/N: OLOS
 NICOMATIC RECEPTACLES (PINS) MATTE TIN PLATED P/N: 14106-12
 HOUSING ORIENTED WITH LATCH DOWN

PINOUT	
1	LR
2	LL
3	SHLD
4	UL
5	UR

UNIT	INCHES [MM]
.X	±TOL
.XX	±.03 [-.76]
.XXX	±.015 [-.38]
ANGLES	±1°

3M TROUBLE SHOOTING SYSTEMS 3M COMPANY ST. LOUIS, MO 63103-1800 © COPYRIGHT 2006 THE COMPANY'S ASSUMED RESPONSIBILITY OF THE 3M COMPANY AND MAY NOT BE REPRODUCED OR TRANSMITTED IN ANY FORM OR BY ANY MEANS WITHOUT THE WRITTEN PERMISSION OF 3M OR OTHERWISE FOR OTHER THAN 3M ADVERTISING PURPOSES.	
DATE	MTD 5/23/06
DO NOT SCALE DRAWING	
DATE	1 = 1

J	REVISED PER CO 036265	4/13	SB
H	REVISED PER CO 036120	2/13	SB
REV	CHANGE NOTICE	DATE	BY
MARKETING DRAWING SCT32NN 26.28" W			
DATE	5/23/06	DATE PLOTTED	5/23/06
BY	MTD	SCALE	1 OF 1
APP	REVISION NO.	PROJECT NO.	TSD-31971
DATE	1 = 1	DATE	J